

MORTON:PATTISON

ecological design & build landscape

Excavator / Tractor Operator – Countryside & Landscape

Role Description

The Employer

Morton : Pattison are emerging as an industry leader in design & delivery of countryside and ecological works in the south of England. We are widely recognised for our specialist skills and experience in combining ecology, landscape and construction to deliver the best outcomes for biodiversity and people.

We work on a diverse range of projects including design & build of countryside structures, access works, large scale habitat management, renewable energy sites and ecological enhancement. Our clients are distributed throughout the private, public and charitable sectors including nature conservation charities, local authorities, green energy companies and ecological consultancies.

Due to continued growth driven largely by repeat custom, recommendation and appointment to local authority frameworks, we are looking for professional and positive team players who share our values to join us and make a positive contribution to the region's countryside.

Morton : Pattison is an equal opportunities employer with a strong focus on staff development with the goal of building and retaining a team that grows in capacity alongside the company.

www.mortonpattison.com

Role Purpose

Morton : Pattison was established in 2015 and has rapidly established itself as a well-respected name in landscape and ecology in the region. In addition to the organic growth over this period, Morton : Pattison has won appointment to various County Council countryside frameworks and developed specialisms in landscape construction. Most plant & equipment is hired in as required; however this growth has enabled the company to invest in a variety of small plant & equipment that now requires a team member to operate, transport and maintain. This is a role that will develop as the company continues to grow.

Reporting to:

Directors, line managed by Managing Director.

MORTON:PATTISON

ecological design & build landscape

Duties & Responsibilities:

- Work with the site teams operating small plant on site (e.g. tractors, excavators, dumpers, rollers, mowers) to assist in delivering the portfolio of landscape and ecological contracting work
- Transport plant & equipment to & from sites
- Carry out scheduled & responsive maintenance to small plant, road vehicles, mechanical equipment & tools
- Assist team members with non-plant operating tasks as the need arises.
- Maintaining a professional, approachable manner with clients, members of the public and others
- A good approach to health and safety, complying with Morton : Pattison Risk Assessments and Health and Safety Policy and procedures

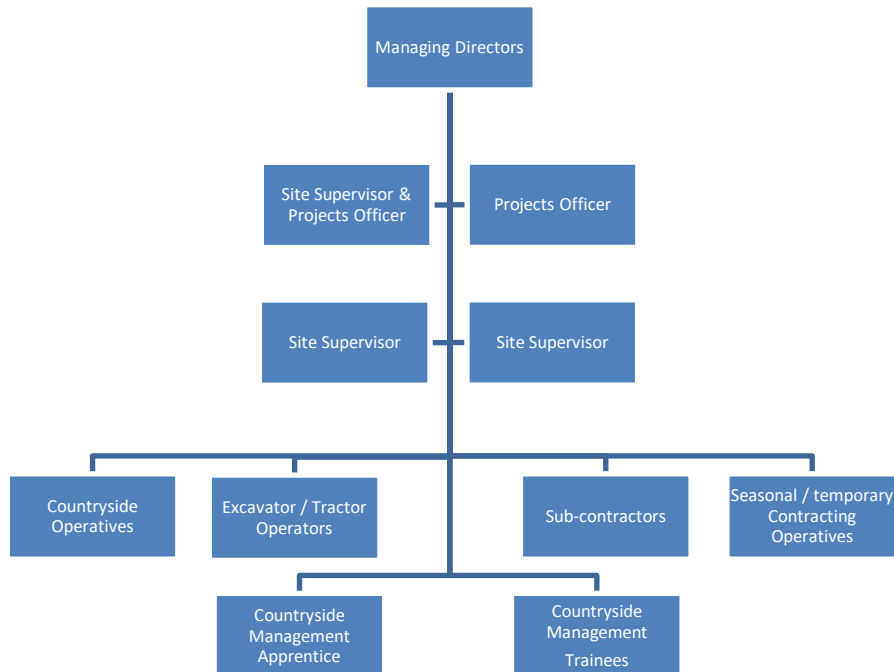
Working Conditions

The work will vary throughout the year but will be predominantly outdoors, in all weather, with some time spent in the company workshop carrying out maintenance work.

Bristol Office: 22a Cotswold Road, Bristol, BS3 4NT

Registered & Winchester Office: 17 Woodgreen Road, Winchester, Hampshire, SO22 6LH
MORTON : PATTISON is the trading name of Morton Pattison Ltd. Registered in England & Wales.
Company number: 09422091

Organisational structure



Role within team

Morton : Pattison has two Managing Directors, along with Project Officers, who all act as Project Managers. Day-to-day communication for the role holder will primarily be with the Site Supervisors.

The team will often be working in small groups on 2-4 sites at a time, the personnel allocated to each job changing to fit with project requirements, skill sets and resource availability. As a small company, the role holder will provide a significant input to the overall workload delivery and will be involved in setting up & developing the workshop and associated systems.

Location

The company is based in Exton, Hampshire. Work sites will predominantly be in Hampshire, Berkshire and Surrey.

MORTON:PATTISON

ecological design & build landscape

Duration

On completion of 3-month probation period this is a permanent, full-time contract.

Working hours

07:30 –16:30 Monday–Friday, either onsite or working at the company base in Exton.

Remuneration

£28,000 - £32,000 per annum depending on experience

Holiday entitlement

28 days pro-rata inclusive of bank and statutory holidays with additional leave entitlement earned annually.

Bristol Office: 22a Cotswold Road, Bristol, BS3 4NT

Registered & Winchester Office: 17 Woodgreen Road, Winchester, Hampshire, SO22 6LH
MORTON : PATTISON is the trading name of Morton Pattison Ltd. Registered in England & Wales.
Company number: 09422091

MORTON:PATTISON

ecological design & build landscape

Mission Statement

We are a contracting, consultancy and design firm providing specialist countryside services that bring together ecological, design & build and landscape expertise.

Our work has biodiversity and people at its core, often working with protected species and on protected sites to deliver practical, sustainable and ecologically informed solutions.

Our core values are:

- **Committing** to positively contributing to the **natural environment**
- **Developing** a **motivated, collaborative** team with **integrity**
- **Delivering high quality** projects and service

Bristol Office: 22a Cotswold Road, Bristol, BS3 4NT

Registered & Winchester Office: 17 Woodgreen Road, Winchester, Hampshire, SO22 6LH
MORTON : PATTISON is the trading name of Morton Pattison Ltd. Registered in England & Wales.
Company number: 09422091