

MORTON:PATTISON

ecological design & build landscape

Countryside Worker Apprentice

Role Description

The Employer

Morton : Pattison are emerging as an industry leader in design & delivery of countryside and ecological works in the south of England. We are widely recognised for our specialist skills and experience in combining ecology, landscape and construction to deliver the best outcomes for biodiversity and people.

We work on a diverse range of projects including design & build of countryside structures, access works, large scale habitat management, renewable energy sites and ecological enhancement. Our clients are distributed throughout the private, public and charitable sectors including nature conservation charities, local authorities, green energy companies and ecological consultancies.

Due to continued growth driven largely by repeat custom, recommendation and appointment to local authority frameworks, we are looking for positive team players who share our core values to join us and make a positive contribution to the region's countryside.

Morton : Pattison is an equal opportunities employer with a strong focus on staff development with the goal of building and retaining a team that grows in capacity alongside the company.

www.mortonpattison.com

Role purpose

The purpose of the role will be to assist with the on-site practical delivery of our countryside, landscape and ecology contracting work. This is a training role to support personal and professional development – as such, there will be significant on-the-job training to increase knowledge and skills, as well as 7 separate week-long blocks of college release time to study at Sparsholt college.

Reporting to:

Site Supervisor, line managed by Projects Officer.

MORTON:PATTISON

ecological design & build landscape

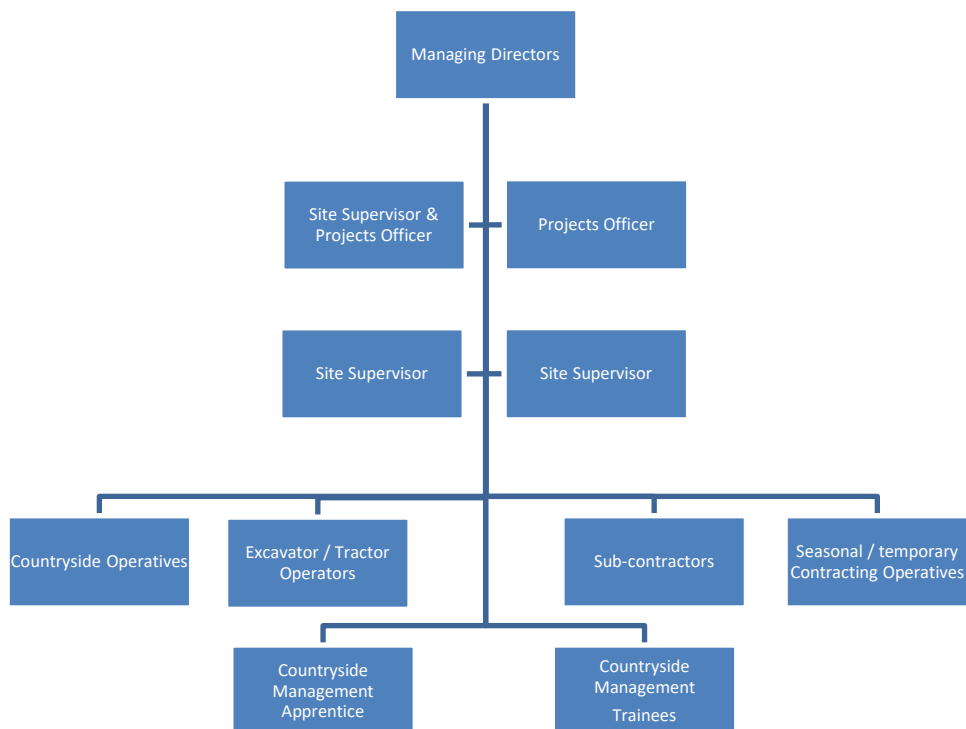
Duties & Responsibilities:

- Working within a team to deliver the portfolio of landscape and ecological contracting work
- Maintaining a professional, approachable manner with clients, members of the public and others
- Safe use and maintenance of tools and machinery
- A good approach to health and safety, complying with Morton : Pattison Risk Assessments and Health and Safety Policy

Working Conditions

The work is predominantly outdoors, in all weather. The role involves strenuous physical activity including manual handling and certain tasks will be repetitive.

Organisational structure



Bristol Office: 22a Cotswold Road, Bristol, BS3 4NT

Registered & Winchester Office: 17 Woodgreen Road, Winchester, Hampshire, SO22 6LH
MORTON : PATTISON is the trading name of Morton Pattison Ltd. Registered in England & Wales.
Company number: 09422091

Role within team

Day-to-day reporting for the trainees will primarily be with the Site Supervisors with line management support from the Project Officers.

The team will often be working in small groups on 2-3 sites at a time, the personnel allocated to each job changing to fit with project requirements, skill sets and resource availability. As a small company, the trainees will provide a significant input to the overall workload delivery.

Training

Invaluable on-the-job training in practical skills, tool use, ecology, species ID, legislation and industry awareness. Provisional CSCS card, health & safety training, 1st aid, DISC communication profiling & training workshop.

Location

The company is based in Exton, near Winchester. Work sites will predominantly be in Hampshire, with some work delivered in surrounding counties including Surrey, Berkshire, Dorset, Wiltshire and West Sussex.

Duration

This is a 12-15 month temporary contract starting Monday 30th September 2024, ending on completion of work-place based college assessment (college course is 12 months + up to 3 months to organise assessment). There is possibility of progressing to a permanent contract.

Working hours

Normal working hours are 40 per week, 07:30 am to 4:30 pm. Monday to Friday, with 2 x 30-minute unpaid breaks each day 10:30 am - 11:00 am and 13:00 pm- 13:30 pm.

Remuneration

£13,312 per annum.

Holiday entitlement

28 days pro-rata inclusive of bank and statutory holidays.

MORTON:PATTISON

ecological design & build landscape

Mission Statement

We are a contracting, consultancy and design firm providing specialist countryside services that bring together ecological, design & build and landscape expertise.

Our work has biodiversity and people at its core, often working with protected species and on protected sites to deliver practical, sustainable and ecologically informed solutions.

Our core values are:

- **Committing** to positively contributing to the **natural environment**
- **Developing** a **motivated, collaborative** team with **integrity**
- **Delivering high quality** projects and service

Bristol Office: 22a Cotswold Road, Bristol, BS3 4NT

Registered & Winchester Office: 17 Woodgreen Road, Winchester, Hampshire, SO22 6LH
MORTON : PATTISON is the trading name of Morton Pattison Ltd. Registered in England & Wales.
Company number: 09422091